



16 Channel 480fps / Real-Time Live View

16 channel Video / 16 channel Audio

Full D1 480 fps Real-Time Live View Display

Full D1 480 fps Real-Time Recording Play Back

4 TB Surveillance / Enterprise HDD Storage

30 days Motion Recording at 720x480

10 days 24/7 Full Recording at 720x480

DVD-RW back up drive

CMS (Central Monitoring Station) software

Remote Client / Web Client

Dual Monitor & Dual TV out

Digital WaterMark Technology

SmartSearch Technology

2-Way Voice Over IP

Multi-User access

SmartSearch Technology

REAL TIME LIVE RECORDING / PLAY



Real Time 480fpsDX16D1-4T DVR server displays Real Time 480fps (30fps per camera) at ultra high **Full D1 (720 x 480)** resolution on **All 16 Cameras**.

STORAGE HARDWARE DRIVE

4Tera Byte

Heavy Duty **Surveillance** Storage Drive

Heavy-duty continuous recording and playback in 24x7 video surveillance operations can take a toll on hard drives, with data integrity and reliability issues inevitably arising. As Surveillance storage drive typically use multiple HDDs to record in harsh 24x7 operating environments, ensuring video data integrity and reliability is particularly challenging. While desktop-class hard drives are designed for data integrity and CE HDDs, such as those used in personal video recorders, favor streaming efficiency over data integrity, Surveillance storage HDDs require both smooth streaming and high data integrity.

Up to **30 days** Motion Recording (full D1@ 480fps) Or, **10 days** Standard Recording (24/7 full D1@480fps)



CENTRAL MONITORING SYSTEM



DUAL MONITOR DISPLAY



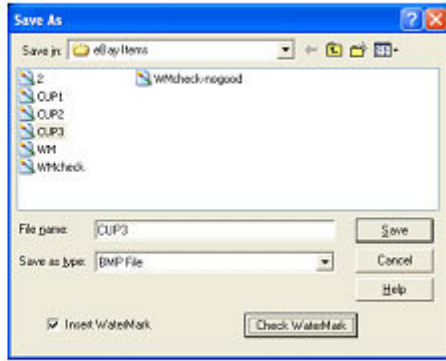
Dynamic Dual Monitor Display

DX16D1-4T includes Dynamic Dual Monitor display for Live View on both monitors or Live View on one of the monitor + Play Back on the other monitor. This advance function is designed for high-level security video monitoring. DX16D1-4T also provides additional Dual TV out put to display. Dual TV display out put shows 16 cameras each on two TVs.

DIGITAL WATERMARK

Intelligent Digital WaterMark Technology

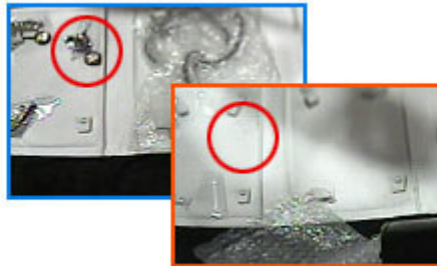
DX16D1-4T includes intelligent digital watermark technology to validate authenticity of captured & backed up images. Images that are captured & backed up from DX16D1-4T can be used as a valid court evidence.



SMARTSEARCH TECHNOLOGY

Intelligent SmartSearch Technology

Intelligent SmartSearch allows user to specify SmartSearch areas to search more effectively.



VOICE OVER IP

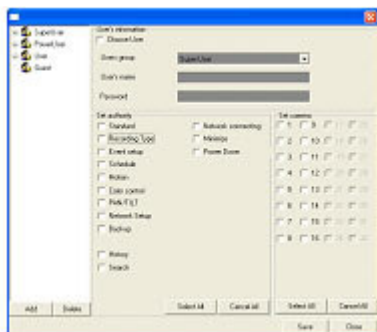
2-Way Voice over IP

DX16D1-4T allows remote users to communicate using 2-way voice over IP. This function can also allow send live voice warning through public speaker system.



Voice communication

MULTI-USER ACCESS



Multi-User Access

DX16D1-4T system can allow different security level users to log on at the server or remote client site. This function can authorize or restrict any user from accessing set up, search, remote connection & power down. This function can also authorize or limit accessing any camera(s).

HIGH PERFORMANCE DVR TECHNOLOGY

High Performance Surveillance DVR Technology

DX16D1-4T equipped with high quality & high performance components inside. DX16D1-4T includes powerful Intel Core 2 Duo P4 processor, 4GB DDR2 memory, ATI 512MB PCI Express graphics adapter, Surveillance/enterprise storage HDD & heavy duty 4U server case.



DX16D1-4T



Core 2 Duo P4



4GB DDR2



ATI 512MB PCI Express



HDD

PRODUCT SPECIFICATIONS

Camera Input	16Ch.
Audio Input	16Ch.
Resolution	720X480
Display Speed(FPS)	480FPS
Recording Speed(FPS)	480FPS
Compression	Advanced Hardware MPEG4+
Recording Type	Sequence, Scheduled, Motion, Recording, Record Motion, Record Sensor, Sensor Motion, Record Motion Sensor, Pre/Post Recording by frame
Recording Schedule	Scheduled by time, date and camera
Motion Detection	Multi-zones, Multi-channels
Sensor Input/Control Output	16/8 (Option-16/16)
Pan/Tilt Control	RS232C (Pan/Tilt/Zoom/Focus/Preset/Group)
Auto Switching	1,4,6,7,9,10,13 Ch. by time interval
Watch Dog Function	Auto rebooting
TV OUT	A/V Monitor

Network	Remote monitoring, recording, searching changing setup, backup and Pan/Tilt control anywhere in the world via TCP/IP, IPX, PSTN, ISDN, ADSL, etc.
Storage Structure	Own DB Structure
Data backup	HDD, CD-RW, DVD, DAT, ZIP, Removable HDD, etc.
Data backup format	AVI, JPG, BMP, etc.



Contáctenos:

Email: info@ldingetronic.com

Telf: 0269.246.11.96

Cel. 0416.858.87.69

Cel. 0414.521.24.60

WWW.LDINGETRONIC.COM